

EVERIDGE[®] Every step of the way[®]

 CROWNTONKA[®]

 ICS[®]

 PREPRITE[®]

Panel Walk-Ins



One-Piece Walk-Ins



Cook-Chill Solutions



www.everidge.com

Panel Walk-Ins



With flexible design for your unique setting, Everidge's CrownTonka panel walk-in refrigeration units can be perfectly fitted for your cold storage space. Our durable modular options offer maximum efficiency, excellent construction, and superior materials.

Designed specifically to meet the needs of food retailing operations, CrownTonka panel walk-in coolers, freezers, and combos provide you with optimal cold storage for your store, regardless of your grocery offer.

CrownTonka panel units allow you to specify the perfect temperature controlled walk-in solution for your refrigerated space.

CLASSIFICATIONS & APPROVALS

All CrownTonka walk-in units are approved under numerous classifications, providing our customers with total peace of mind over perishable inventories:

- EISA-compliant
- NSF-certified
- U.L./Class 1-listed urethane foam insulation
- FM4880-approved (PN #713)
- USDA-approved materials
- UL/ULC electric
- U.L. Listed, Classified Building unit panels
- Meets the certification standards of multiple U.S. state and Canadian licensure and compliance codes



One-Piece Walk-Ins



Explore Everidge's ICS stand-alone cold storage walk-ins; space-saving outdoor units which easily expand your refrigeration and freezer options. With flexible designs to suit your business space, each one-piece temperature controlled solution can stand alone as a satellite unit and free up indoor space. These free-standing walk-ins arrive ready-for-use, pre-assembled and fully operational, with customizable finishes to match the existing building exterior.

Let Everidge Handle All of The Work

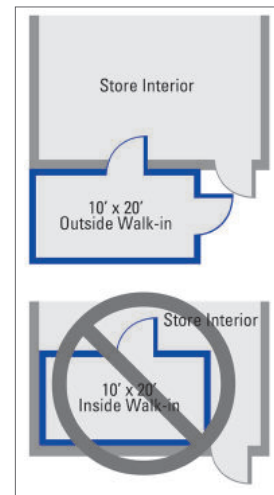
Our ICS one-piece walk-ins arrive pre-assembled and fully constructed. Once installed, our walk-ins are ready to begin cooling in just a few hours.



CLASSIFICATIONS & APPROVALS

All Everidge ICS walk-in units are approved under numerous classifications, providing our customers with total peace of mind over perishable inventories:

- EISA-compliant
- NSF-certified
- U.L./Class 1-listed urethane foam insulation
- USDA-approved materials
- UL/ULC electric
- Hurricane and seismic loading
- Meets the certification standards of multiple U.S. state and Canadian licensure and compliance codes, including Dade County, Florida



ICS® Walk-In Standard Finishes

ICS walk-in exteriors are, as standard, a tough stucco embossed metal, with a factory baked-on polyester coating, that provides years of maintenance free service. We also offer a wide range of color options, making it easy to select a finish that complements your building's color scheme.



CrownTonka® Walk-In Standard Finishes

CrownTonka walk-ins have an interior and exterior finish of 26-gauge galvanized steel, as standard. We also offer a wide range of color options, making it easy to select a finish that complements your building's color scheme.

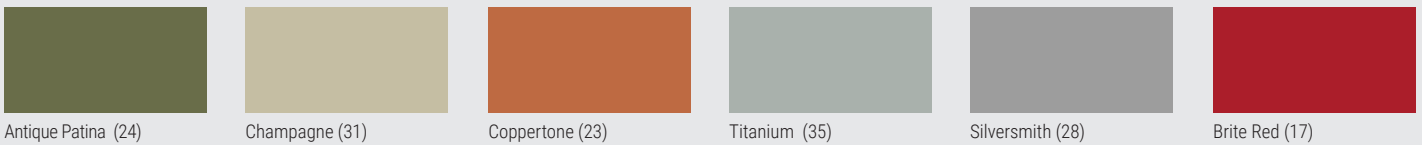


ICS® & CrownTonka® Optional Walk-In Colors

STOCK COLORS | 70% PVDF resin based coatings provide high-performance durability for exterior and interior applications. These coatings are designed to resist fading, chalking, and abrasion. Meets the requirement of AAMA 2605-13 for aluminum substrates.

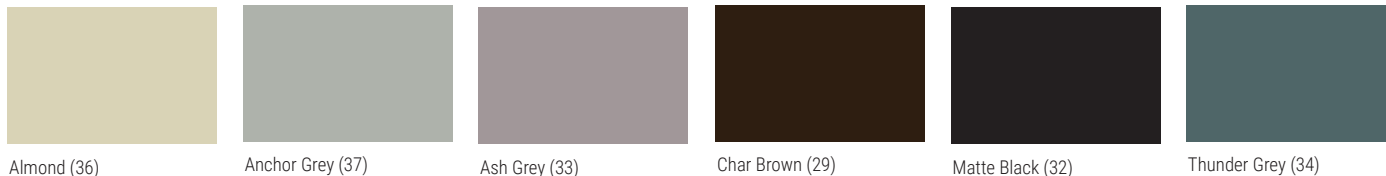


PREMIUM FINISH | PVDF resin based coatings, as noted above, with premium pigmentation to obtain metallic or deep color for desired aesthetics.



ICS® & CrownTonka® Optional Walk-In Finishes

MATTE FINISH | 70% PVDF resin based coatings, as noted above, designed to simulate natural metal hues in a high performance paint system.



NATURAL METALS

Due to their beauty, durability and time-proven performance, natural metals are a preferred material used in architecture. Natural metals will weather and patina naturally over time, adding character and aesthetic appeal to any building design. In addition to natural metals, We offer 55% Al-Zn alloy coated steel with acrylic coating and anodized aluminum as standard available materials.

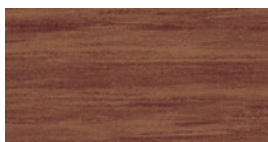


WOODLAND SERIES*

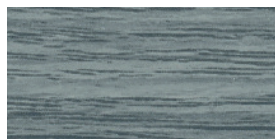
Add the warmth of wood with the durability of metal to your next project. We offer four classic woodgrain patterns with a 70% PVDF coating. Available in .032 aluminum.



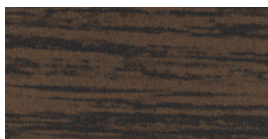
Birch (57)



Cedar (54)



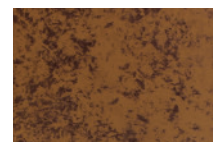
Driftwood (53)



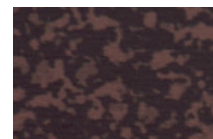
Walnut (55)

OXIDE SERIES*

Made to look like weathered steel, combine the aesthetic appeal of aged metal with the advantages of brand new metal cladding with a 70% PVDF finish.



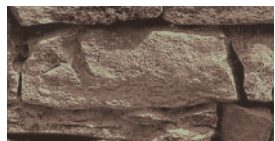
Copper Brown (42)



Tarnished Red (47)

LAMINATES*

We offer a stacked stone laminate pattern. Our laminate is UV stable for exterior wall applications.



Stacked Stone (85)

* Special material. Pricing and availability dependent upon project specifics. Color chips available upon request.

Stainless steel products provided by ROOFINOX®. Colors are as close to the actual colors as modern printing allows. Metal color chips are available on request (this is a requirement for all premium colors) and should be used for final color selection. If you have requirements or preference for colors or finishes other than shown, please contact us. Color availability varies by material, gauge and profile. We reserve the right to modify, eliminate and/or change our products without prior notification. All colors are produced under stringent guidelines and tolerances that are identified within the coated metal industry. Batch to batch variations may occur within these established industry tolerances. Care should be exercised by customer when mixing lots. Contact us for more information.

SaniSteel® Slip Resistant, Anti-Bacterial Interior Panels & Flooring

For foot and hand cart traffic

All Everidge walk-ins are now available with optional SaniSteel® slip resistant, anti-bacterial interior panels and/or floors. SaniSteel® is a pre-coated steel, which is certified as food safe, providing total peace of mind for hygiene in food service and food retailing environments. Independent tests have also demonstrated that SaniSteel® delivers unparalleled slip resistance characteristics, even when wet, for improved workplace safety.

- Better slip resistance than ADT by ASTM F 1679 test standards
- Anti-bacterial pre-coated steel
- Eliminates many harmful and potentially dangerous bacteria strains
- NSF certified
- High resistance to corrosion and scratches
- Available only from Everidge brands



Technical Details & Specifications

Film coating thickness: from 100 µ to 200 µ

Standard metal supports

- Hot dip galvanized steel
- 19 GA (1.2mm)

Dimensions

- Thickness of metal support: from 0.3 to 2 mm .0118 to .078 inches
- Sheet:

Max width	1400 mm	55.118 inches
Max length	5000 mm	196.85 inches
- Strip:

Max width	1400 mm	55.118 inches
Minimum width	19 mm	.748 inches
- Coil:

I.D.	500 mm	> 20"
O.D.	1550 mm	61.02 inches

Film coating thickness: from 100 µ to 200 µ

Standard metal supports

- Hot dip galvanized steel
- 19 GA (1.2mm)

Dimensions

- Thickness of metal support: from 0.3 to 2 mm .0118 to .078 inches
- Sheet:

Max width	1400 mm	55.118 inches
Max length	5000 mm	196.85 inches
- Strip:

Max width	1400 mm	55.118 inches
Minimum width	19 mm	.748 inches
- Coil:

I.D.	500 mm	> 20"
O.D.	1550 mm	61.02 inches

Protective film

SaniSteel® film

Adhesive

Surface treatment

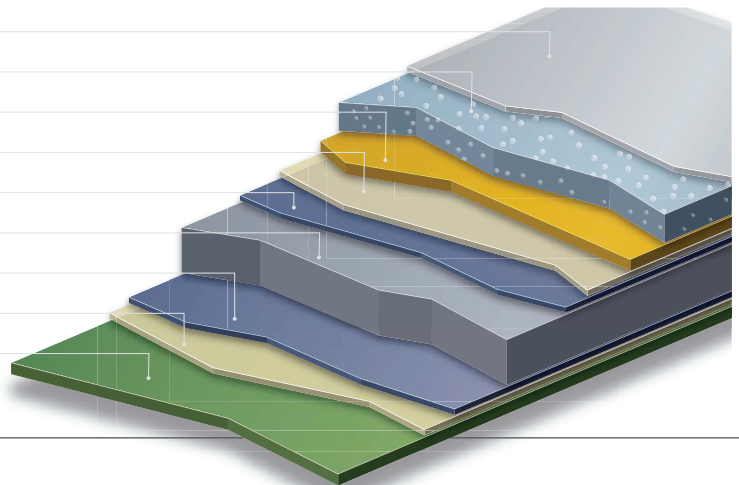
Zinc

Metallic support

Zinc

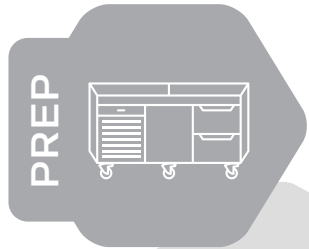
Surface treatment

Back coat Primer



The PrepRite[®] Cook-Chill System

Models



**Customizable Cold Storage
Pizza Prep Tables**

These refrigeration units help keep ingredients organized and easily accessible for fast and efficient food prep and mise en place. They offer unsurpassed performance in all kitchen environments and are available in a broad range of styles and sizes.



38 ins
61 ins
84 ins
PRC60CG
PRC60FG

PRC84CG
PRC84FG
PAD7



Cooking & Storage Vacuum Bags

Our cooking and vacuum bags are the results of extensive research and development. The bags have been designed to withstand higher temperatures, ensuring food safety and preservation.



Cooking
5118
5119
5120

Storage
4256 5505
4260 5506
4261 5824
4262 5825



**Commercial In-Chamber
Vacuum Sealers**

Designed with the highest standard of vacuum technology to help extend shelf life up to four times longer compared with conventional cooling and freezing methods, providing air-free packaging that protects food items and prevents freezer burn.



PVS27-6-1
PVS32-8-1
PVS32G-8-1
PVS42-20-1
PVS42P-12-2

PVS42GP-20-2
PVS52-25-1
PVS52-25-2
PVS52GP-25-2

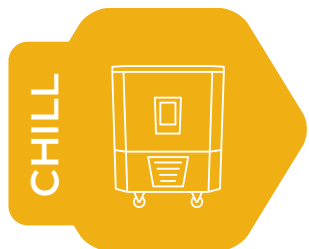


**High-Capacity Sous
Vide Circulators**

Using the game-changing techniques of sous vide cooking and precise temperature control, the cutting-edge PrepRite sous vide circulator, with WiFi connectivity, provides a compact, convenient solution for preparing a wide variety of menu items.



PSV50 - WiFi



**Commercial Blast Chillers /
Shock Freezers**

When you need to chill food fast, you need a commercial blast chiller/shock freezer from PrepRite by Everidge. These fast-freezing appliances help preserve just-cooked flavor while keeping food safe from bacterial growth and contamination.

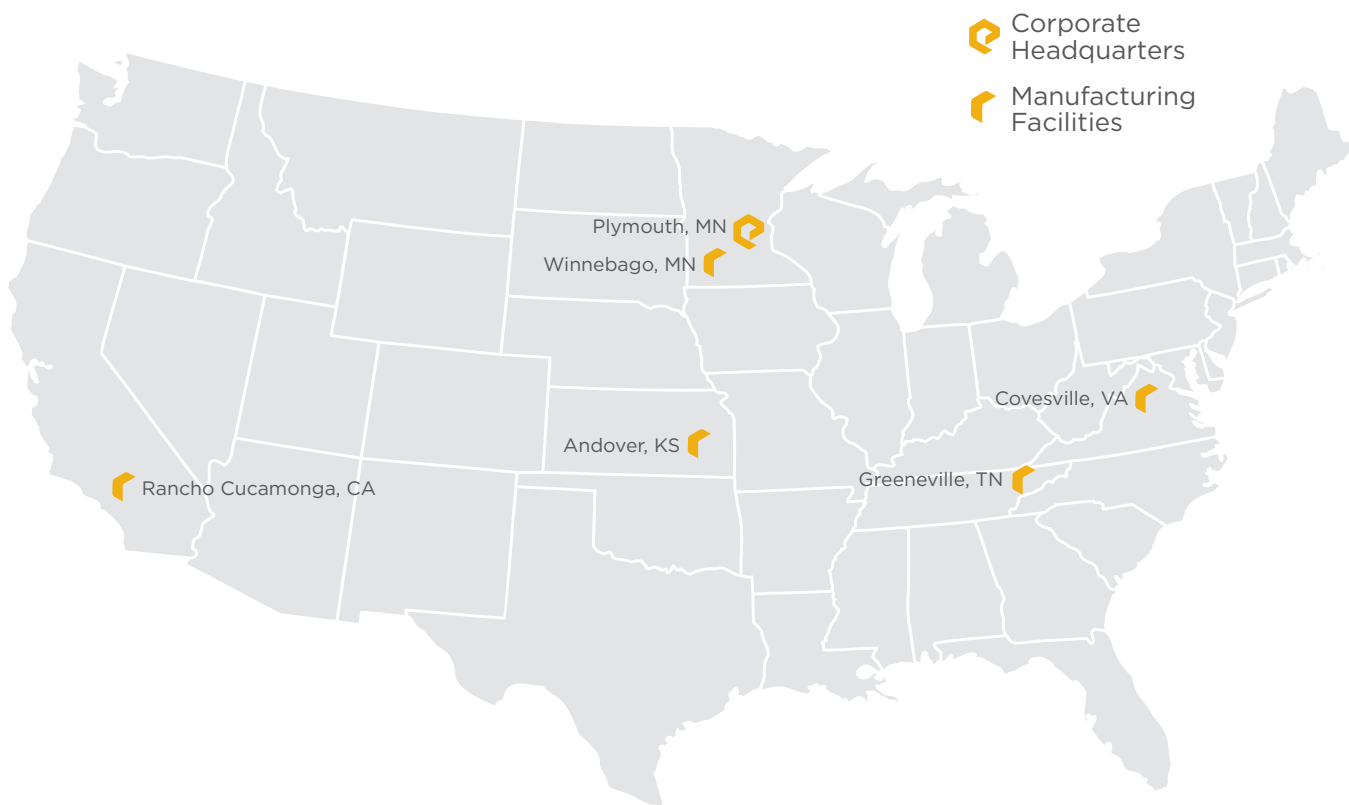


PBF3.0
PBF4.0
PBF5.0
BPF7.0
PBF12.0
PBF15.0
PBF18.0

PBF250
PBF/PBC450
PBF/PBC850
PBF/PBC1200

National Manufacturing & Service Support

With conveniently located manufacturing facilities in California, Kansas, Minnesota, Tennessee, and Virginia, backed by a national service network, we are well placed to meet your requirements for cold storage solutions and food prep equipment.



CROWNTONKA[®] ICS[™] LOTEMP DOORS[™] PREPRITE[®] SMARTRITE[®] THERMALRITE[®]

Proud to be family-owned.