



Color Guide

All Everidge Brand walk-in exteriors are, as standard, are a tough stucco embossed metal, with a factory baked-on polyester coating, that provides years of maintenance free service. We also offer a wide range of color options, making it easy to select a finish that complements your building's color scheme.*

ICS® Walk-In Stock Colors



ThermalRite® & CrownTonka® Walk-In Stock Colors



ICS, ThermalRite, & CrownTonka Optional Walk-In Colors

STOCK COLORS

70% PVDF resin based coatings provide high-performance durability for exterior and interior applications. These coatings are designed to resist fading, chalking, and abrasion. Meets the requirement of AAMA 2605-13 for aluminum substrates.



Stock Materials

All basic & premium colors are available in:
26 ga Galvanized Steel
.040 Aluminum

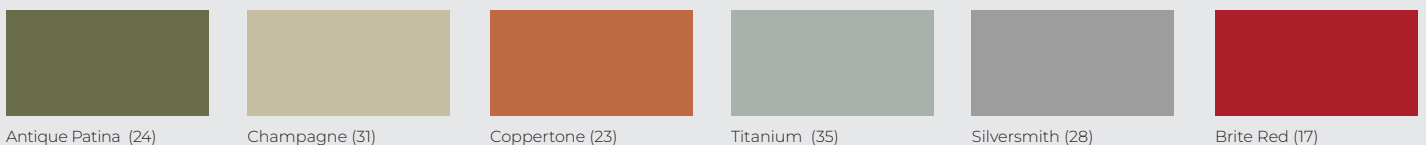
Additional Stock Materials Available for Select Colors and Finishes:

G90 Galvanized: 26 ga, 24 ga, 22 ga, 20 ga, 16 ga
Acrylume: 26 ga
Aluminum Smooth: .032, .040, .050, .100, .125
Aluminum ADT: .063, .100, .125
Stainless Steel: 304 22 ga, 20 ga, 18 ga

Please inquire for custom materials and colors.

PREMIUM COLORS

PVDF resin based coatings, as noted above, with premium pigmentation to obtain metallic or deep color for desired aesthetics.



ICS®, ThermalRite®, & CrownTonka® Optional Walk-In Finishes

MATTE COLORS

70% PVDF resin based coatings, as noted above, designed to simulate natural metal hues in a high performance paint system.



Almond (36)



Anchor Grey (37)



Ash Grey (33)



Char Brown (29)



Matte Black (32)



Thunder Grey (34)

NATURAL METALS

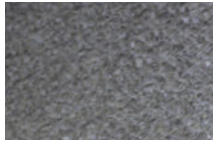
Due to their beauty, durability and time-proven performance, natural metals are a preferred material used in architecture. Natural metals will weather and patina naturally over time, adding character and aesthetic appeal to any building design. In addition to natural metals, We offer 55% Al-Zn alloy coated steel with acrylic coating and anodized aluminum as standard available materials.



Clear Satin Anodized (70)



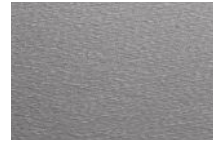
Dark Bronze Anodized (71)



55% Al-Zn Alloy Coated Steel with Acrylic Coating (97)



Copper (49)*



Classic Stainless Steel (40)*



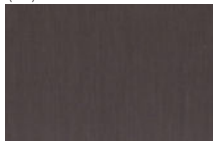
Terne Coated Stainless Steel (41)*



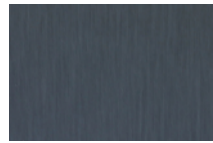
Grey Zinc (50)*



Dark Zinc (51)*



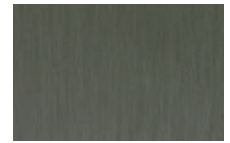
Brown Zinc (89)*



Blue Zinc (94)*



Red Zinc (95)*



Green Zinc (96)*

WOODLAND SERIES**

Add the warmth of wood with the durability of metal to your next project.

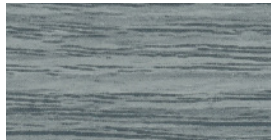
We offer four classic woodgrain patterns with a 70% PVDF coating. Available in .032 aluminum.



Birch (57)



Cedar (54)



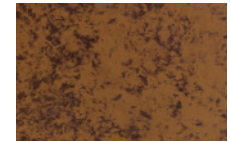
Driftwood (53)



Walnut (55)

OXIDE SERIES**

Made to look like weathered steel, combine the aesthetic appeal of aged metal with the advantages of brand new metal cladding with a 70% PVDF finish.



Copper Brown (42)



Tarnished Red (47)

LAMINATES**

We offer a stacked stone laminate pattern. Our laminate is UV stable for exterior wall applications.



Stacked Stone (85)

*Stock colors and materials. Pricing and availability dependent upon project specifics.

**Special material. Pricing and availability dependent upon project specifics. Color chips available upon request.

Stainless Steel products provided by ROOFINOX®. Colors are as close to the actual colors as modern printing allows. Metal color chips are available on request (this is a requirement for all premium colors) and should be used for final color selection. If you have requirements or preference for colors or finishes other than shown, please contact us. Color availability varies by material, gauge and profile. We reserve the right to modify, eliminate and/or change our products without prior notification. All colors are produced under stringent guidelines and tolerances that are identified within the coated metal industry. Batch to batch variations may occur within these established industry tolerances. Care should be exercised by customer when mixing lots. Contact us for more information.



CROWNTONKA®
 ICS®
 LOTEMP DOORS®
 PREPRITE®
 SMARTRITE®
 THERMALRITE®

Proud to be family-owned.



Walk-In Coolers/Freezers · Restoration & Replacement Doors · Cook-Chill Specialty Solutions · Parts, Service & Warranty · Construction Services

15600 37th Ave N · Suite 100 · Plymouth, MN 55446 · 888-227-1629 · www.everidge.com · info@everidge.com